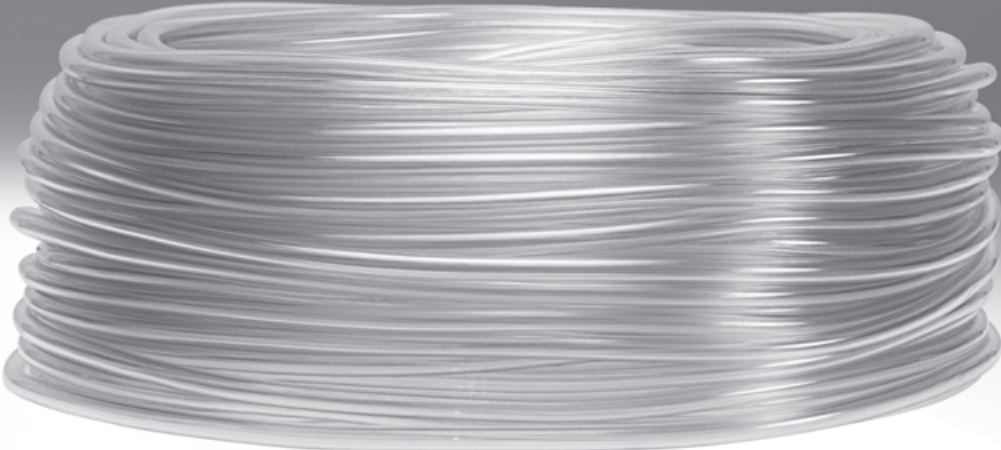



Plastic tubing, standard I.D.

FESTO



Plastic tubing, standard I.D.

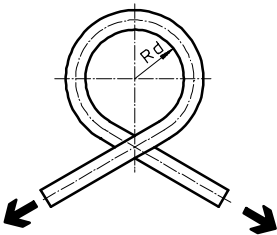
Product range overview

Product range overview											
Version	Type	I.D. [mm]	Colour			Operating medium			Resist- ance	Shore hardness ²⁾	→ Page/ Internet
			Blue	Black	Natural	Compressed air	Vacuum	Water (not drinking water)			
	PU TPE-U(PU) ¹⁾	9	-	■	-	■	-	-	+	A 91 ±3	3
		13	-	■	-	■	-	-		A 86 ±3	

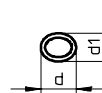
- 1) Fibre-reinforced
- 2) Values are determined using test boards. Values determined using tubing may vary.
- + Limited suitability (on request)
- Not suitable

Method of measurement

Flow-relevant bending radius Rd



The tube is bent in the direction of its own curve until the tubing outer diameter is flattened by 5%. Rd is then calculated mathematically. The flow rate is not reduced until Rd is reached.



Cross section flattened by bending the tube.
 d = non-deformed tubing O.D.
 d1 = deformed tubing O.D.

Plastic tubing PU

Technical data

FESTO

Plastic tubing PU

Highly flexible fibre-reinforced plastic tubing distinguished by its great resistance to abrasion and to kinks.



General technical data		
Type	PU-9	PU-13
Pneumatic connection	For barbed connector internal diameter 9 mm with nut	For barbed connector internal diameter 13 mm with nut

Operating and environmental conditions		
Type	PU-9	PU-13
Operating pressure for entire temperature range [bar]	0 ... +10	-0.95 ... +10
Operating medium	Compressed air to ISO 8573-1:2010 [7:-:-]	
Note on operating/pilot medium	Lubricated operation possible	
Ambient temperature [°C]	-35 ... +60	

Possible fittings



Quick connector CK

→ Internet: ck

Materials		
Type	PU-9	PU-13
Shore hardness	A 91 ±3	A 86 ±3
Tube	TPE-U(PU)	
Note on materials	RoHS-compliant Free of copper and PTFE	

Dimensions and ordering data							
O.D.	I.D.	Flow-relevant bending radius	Weight	Colour	Part No.	Type	PU ¹⁾
[mm]	[mm]	[mm]	[kg/m]				[m]
11.6	9	76	0.056	Black	12134	PU-9-SW	50
17.6	13	83	0.133	Black	12133	PU-13-SW	50

1) Packaging unit

Festo - Your Partner in Automation



1 Festo Inc.
5300 Explorer Drive
Mississauga, ON L4W 5G4
Canada

Festo Customer Interaction Center
Tel: 1 877 463 3786
Fax: 1 877 393 3786
Email: customer.service.ca@festo.com

2 Festo Pneumatic
Av. Ceylán 3,
Col. Tequesquináhuac
54020 Tlalnepantla,
Estado de México

Multinational Contact Center
01 800 337 8669
ventas.mexico@festo.com

3 Festo Corporation
1377 Motor Parkway
Suite 310
Islandia, NY 11749

Festo Customer Interaction Center
1 800 993 3786
1 800 963 3786
customer.service.us@festo.com

4 Regional Service Center
7777 Columbia Road
Mason, OH 45040

Connect with us



www.festo.com/socialmedia



www.festo.com

Subject to change